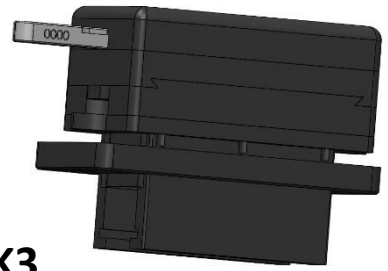


Mounting Instruction

OBD-Saver

intended for the following vehicles

Mazda 2-MK3 ; 3-MK3 ; 6-MK3



Description :

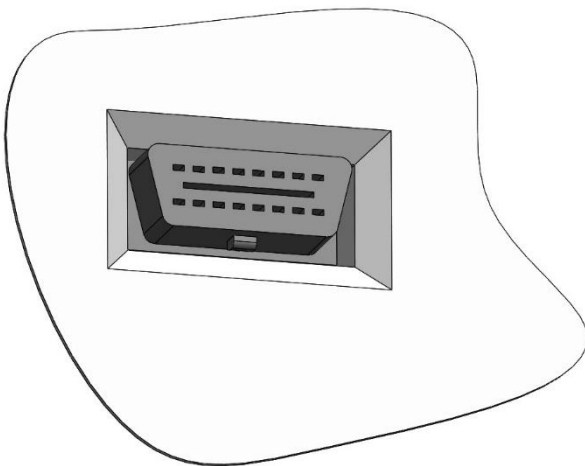
The OBD Saver disables effectively every access to ECUs via OBD – Interface (e.g. electronic immobilizer). The OBD – interface is locked with the OBD Saver. Thus connecting any device to the OBD interface is impossible and the connection to the car therefore denied.

When locked by the OBD Saver your car is protected very effectively. The control unit which controls the ignition of your car cannot be deactivated via OBD. From this time on your car will only start with the original ignition keys!

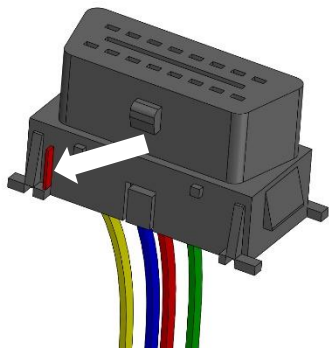
Scope of delivery :

- 1x OBD-Saver enclosure including the lock
- 2x keys
- 1x allen wrench 2,5 / 3
- 1x mounting bracket / 2x fillister head screw M5
- 3x allen wrench M3 + 1x spare screw
- 2x window sticker

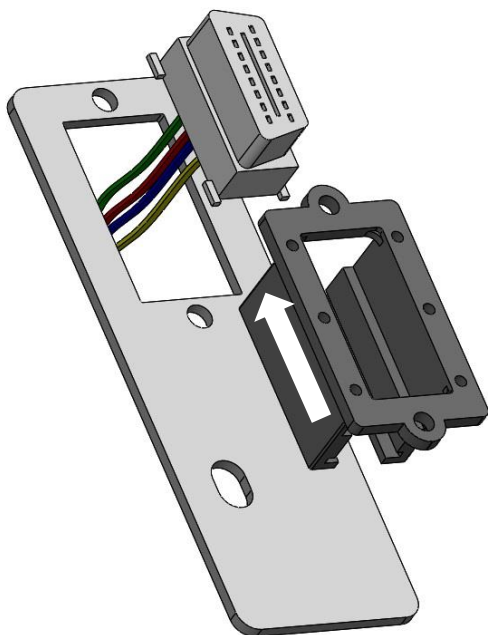
Mounting :



- remove the original OBD socket jack from it's housing

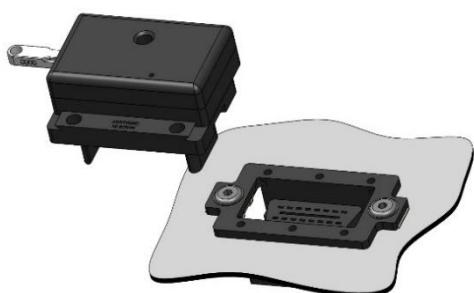


- remove the plastic lug marked red (e.g. with a sharp knife)

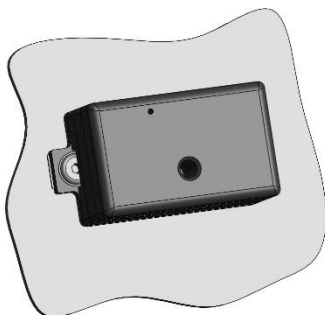


- push the socket jack into the OBD-Saver housing. (The socket jack – barbs have to be fully pressed into the housing!)
- mount both (housing and socket jack) onto the mounting bracket with the provided fillister screws
- mount the 3 parts (mounting bracket with lower OBD Housing & OBD socket jack) with the car frame

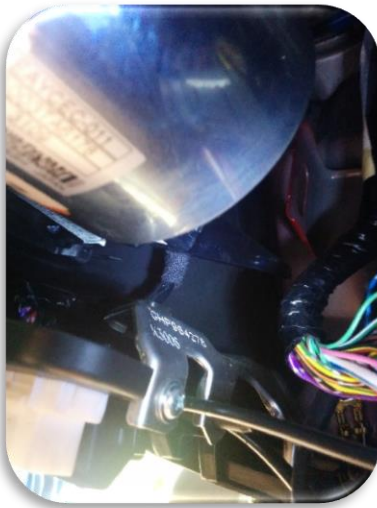
→ see pictures on the following pages



- Plug in the lock and fix it with the provided M3 screws
- Close the OBD-Saver and remove the key



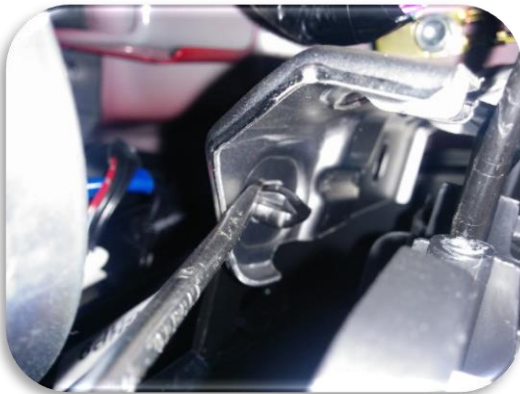
After facelift you can be skipped this steps. After simply unclip pull the OBD socket and thus the cable guide is rotated and the necessary cable length is reached.



Loosen screw



Loosen screw
then pull the
plate forward
to reach and
loosen the
retaining clip
(picture 1)



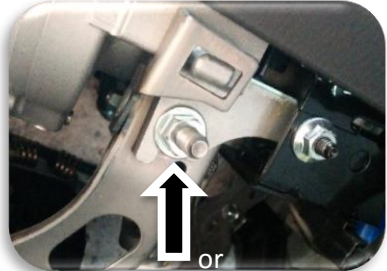
Remove the
retaining clip
from the plate



Remove OBD
jack by
pressing down
the lug



remove the
plastic lug on the
OBD jack



Manual Gearbox
Loosen the nut
then push the
plate onto the
thread > tighten
the nut



Automatic and
Mazda 2 -
use the included
screw



Push the OBD
jack through the
plate hole



Put the OBD
housing and the
jack together



Bolt the OBD housing & jack together with the housing



Plug on the lock and screw it together



Close the OBD saver and remove the key